

CLASS X (2019-20)
SOCIAL SCIENCE (CODE 087)
SAMPLE PAPER-3

Time Allowed : 3 Hours

Maximum Marks : 80

General Instructions :

- (i) The question paper has 35 questions in all.
- (ii) Marks are indicated against each question.
- (iii) Questions from serial number **1 to 20** are objective type questions. Each question carries **one mark**. Answer them as instructed.
- (iv) Questions from serial number **21 to 28** are **3 marks** questions. Answer of these questions should not exceed **80 words** each.
- (v) Questions from serial number **29 to 34** are **5 marks** questions. Answer of these questions should not exceed **120 words** each.
- (vi) Question number **35** is a map question of **6 marks** with two parts-**35 a.** from History (2 marks) and **35 b.** from Geography (4 marks).

SECTION A

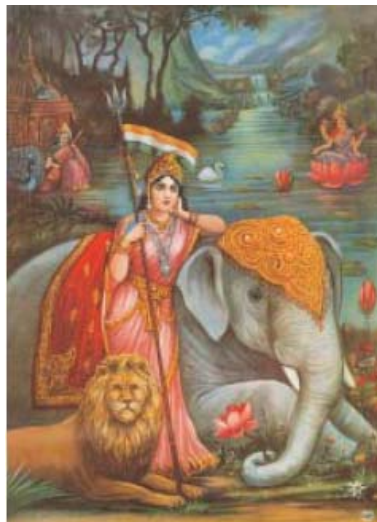
Q1. Match the following items given in column A with those in column B. [1]

Column A		Column B	
(A)	Bankim Chandra Chattopadhyay	(1)	Depressed Classes Association
(B)	B.R Ambedkar	(2)	Famous image of Bharat Mata
(C)	Sir Mohannad Iqbal	(3)	President of the Muslim League
(D)	Abanindranath Tagore	(4)	Vande Matram

Q2. Which one of the following is true regarding how the new artists depicted liberty during the French Revolution? [1]

- (a) As a female figure with a torch of enlightenment in one hand and the Charter of Rights of Man in the other hand
- (b) Blindfold woman carrying a pair of weighing scales.
- (c) The gold red and black tricolour
- (d) Rays of the rising sun

Q3.



The above figure is the symbol of [1]

- (a) Power and authority (b) Power and Justice
(c) Justice and Liability (d) Power and Liability

Q4. Who allots a 'symbol' to the political parties ? [1]

Q5. In which Schedule of the Indian Constitution are the 22 Scheduled languages included ? [1]

- (a) Tenth Schedule (b) Eighth Schedule
(c) Twelfth Schedule (d) Ninth Schedule

Q6. Complete the following table with the correct information regarding Indian national congress. [1]

Political party	Foundation Year	Alliance	Election symbol
Indian national congress	A-?	B-?	Right Hand

Q7. Consumption of energy in all forms has been rising all over the country. There is an urgent need to develop a sustainable path of energy development and energy saving. Suggest any one measures to solve this burning problem. [1]

OR

India is an important iron and steel producing country in the world. Yet we are not able to perform to our full potential. Suggest any one measure to get full potential.

Q8. Correct the following statement and rewrite.
Bokaro has emerged as the electronic capital of India. [1]

OR

The television and mobile are two electronic media of mass communication.

Q9. Which one of the following option best signifies this cartoon? [1]



- (a) Bank lockers of corrupted leaders
(b) Poverty and unemployment
(c) Politics with in caste
(d) Caste inequality

Q10. is the finest iron ore with a very high content of iron up to 70 percent. [1]

OR

..... refineries act as a 'nodal industry' for synthetic textile, fertiliser and numerous chemical industries.

Q11. Name any two West Indies cricketers who have their roots to indentured labour migrants from India ? [1]

OR

Define the term Proto-industrialisation.

Q12. What is secularism ? [1]

Q13. Which among the following statements about India's Constitution is wrong? It [1]

- (a) prohibits discrimination on grounds of religion.
- (b) gives official status to one religion.
- (c) provides to all individuals freedom to profess any religion.
- (d) ensures equality of citizens within different religious communities.

Q14. The goods produced by exploiting natural resources comes under the category of [1]

Q15. When people produce a good by exploiting natural resources, it is known as [1]

- (a) Tertiary sector
- (b) Secondary sector
- (c) Primary sector
- (d) Service sector

Q16. unemployment is a kind of unemployment in which some people look like being employed but are actually not employed fully. [1]

OR

..... sector is the part of a country's economic system that is run by individuals and companies, rather than the government.

Q17. Who among the following wrote Ninety Five Theses criticising many of the practices and rituals of the Roman Catholic Church ? [1]

- (a) Galileo Galileo
- (b) Martin Luther
- (c) Copernicus
- (d) Petrarch

Q18. Arrange the following cotton textile industries place in the direction of North to south [1]

1. Kanpur
2. Indore
3. Coimbatore
4. Madurai

- (a) 1, 2, 4, 3
- (b) 1, 2, 3, 4
- (c) 4, 3, 2, 1
- (d) 3, 4, 2, 1

Q19. In the question given below, there are two statements marked as Assertion (A) and Reason (R). Read the statements and choose the correct option: [1]

Assertion (A) : Belgium and Spain has 'holding together' federation.

Reason (B) : A big country divides power between constituent states and national government.

- (a) Both assertion and reason are true and reason is the correct explanation of assertion.
- (b) Both assertion and reason are true, but reason is not the correct explanation of assertion.
- (c) Assertion is true, but reason is false.
- (d) Both assertion and reason are false.

Q20. The following table gives the GDP in rupees (crores) by the three sectors [1]

Year	Primary	Secondary	Tertiary
1950	80,000	19,000	39,000
2011	9,65,00	13,70,000	30,10,000

The share of primary sector in above GDP table for 1980?

- (a) 57.97 (b) 59.97
(c) 28.26 (d) 13.17

SECTION B

- Q21. Some people think that democracy produces less efficient and effective government. Do you agree with their views ? [3]

OR

Mention any four challenges faced by political parties in India ?

- Q22. Explain the two important factors that shaped Indian politics during the 1920s. [3]

OR

“Method of reinterpretation of history was followed to encourage feeling of nationalism.” Give any three arguments to support this statement.

- Q23. Read the source below and answer the question that follows

SOURCE-A

‘A nation is the culmination of a long past of endeavours, sacrifice and devotion. A heroic past, great men, glory, that is the social capital upon which one bases a national idea. To have common glories in the past, to have a common will in the present, to have performed great deeds together, to wish to perform still more, these are the essential conditions of being a people. A nation is therefore a large-scale solidarity ... Its existence is a daily **plebiscite** ... A province is its inhabitants; if anyone has the right to be consulted, it is the inhabitant. A nation never has any real interest in annexing or holding on to a country against its will. The existence of nations is a good thing, a necessity even. Their existence is a guarantee of liberty, which would be lost if the world had only one law and only one master’.

SOURCE-B

‘The aim of the zollverein is to bind the Germans economically into a nation. It will strengthen the nation materially as much by protecting its interests externally as by stimulating its internal productivity. It ought to awaken and raise national sentiment through a fusion of individual and provincial interests. The German people have realised that a free economic system is the only means to engender national feeling.’

SOURCE-C

‘Let us ask how many men, possessed by thoughts of living and dying for the sake of Liberty, would be prepared to fight for the freedom of the entire people, of all human beings? When asked this question, they would all too easily respond with a “Yes!”, though their untiring efforts are intended for the benefit of only one half of humanity - men. But Liberty is indivisible! Free men therefore must not tolerate to be surrounded by the unfree ...

SOURCE-A

- 23 (1) Explain the meanings of ‘Plebiscite’. [1]

SOURCE-B

- 23 (2) What is theme of this passage? [1]

SOURCE-C

- 23 (3) Is the writer in favour of giving equal rights to women or not? [1]

- Q24. Give reasons as to why the ideal location of sugar mills is near sugarcane producing areas. Support the statement with reasons. [3]

OR

Suggest any five measures to control industrial pollution in India.

- Q25. Why is mica considered to be an indispensable mineral for the electronics industry? Mention the names of the main mica-producing areas of India. [3]

- Q26. In which year was the unification of Italy completed ? Mention two features of the unification movement. [3]

- Q27. Mention any three problems faced by cotton textile industries in India. [3]

OR

‘Energy saved is energy produced’. Justify the statement by mentioning any six measures to conserve the energy resources.

- Q28. What do the banks do with the ‘public deposits’ ? Describe their working mechanism. [3]

SECTION C

- Q29. Write down important causes and effects of the Second World War. [5]

OR

Explain any three problems faced by the Indian weavers by the turn of the 19th century.

- Q30. ‘The task of the native newspapers and political associations is identical to the role of the Opposition in the House of Commons in Parliament in England. That is of critically examining government policy to suggest improvements, by removing those parts that will not be to the benefit of the people, and also by ensuring speedy implementation.

These associations ought to carefully study the particular issues, gather diverse relevant information on the nation as well as on what are the possible and desirable improvements, and this will surely earn it considerable influence.’

(i) What is the source of the above passage?

(ii) What is the role of the native newspapers and political associations in democracy?

(iii) How can these associations improve the outcome of a particular issue?

- Q31. Mention four geographical requirements each for the growth of tea and sugar-cane. [5]

- Q32. How does communalism create problems in politics? [5]

- Q33. Distinguish between primary sector and secondary sector. [5]

OR

How do banks mediate between those who have surplus money and those who need money. [5]

- Q34. Name the ore from which aluminium is obtained. Why is aluminium considered to be an important metal? Name the areas which have rich deposits of the ore of aluminium. [5]

SECTION D

MAP SKILL BASED QUESTION

- Q35. (a) Two places (A) and (B) have been marked on the given outline map of India. Identify them and

write their correct Name on the line drawn near them.

[2]

(A) A place marked by a where the satyagraha movement of former took place.

(B) The place where Indian congress session was held in 1927.

(b) On the same outline map of India locate and label any four of the following with suitable symbol [4]

(i) Ramagundan-Thermal power plant

(ii) Tarapur-Atomic power plant

(iii) Indore-Cotton textile Industry center

(iv) Bhilai-Iron and steel plant

(v) Hyderabad-Software technology park

(vi) Paradip-Major sea port



WWW.CBSE.ONLINE

Download Solved version of this paper from
www.cbse.online

This sample paper has been released by website www.cbse.online for the benefits of the students. This paper has been prepared by subject expert with the consultation of many other expert and paper is fully based on the exam pattern for 2019-2020. Please note that website www.cbse.online is not affiliated to Central board of Secondary Education, Delhi in any manner. The aim of website is to provide free study material to the students.